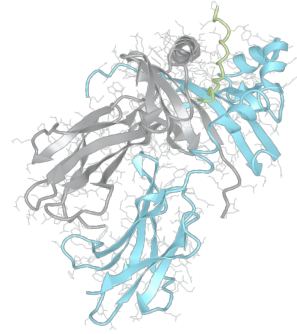


Product datasheet



sHLA– DPB1*01:01bio DPA1*02:02bio

DPB1*0101, DPB10101, DPB1*01, DPB01
DPA1*0202, DPA10202, DPA1*02, DPA02

Serological Name	-
Peptide Load	Endogenous
Modification	Unmodified
Conjugation	Biotin
SKU	DPB10101/DPA10202bio

Product Description

Allele Name	<p>DPA1*02:02</p> <p>DPB1*01:01</p>
HLA Class	HLA Class II
HLA Gene Locus	HLA-DP
Alternative Allele Name A Chain	DPA1*0202, DPA10202, DPA1*02, DPA02
Alternative Allele Name B Chain	DPB1*0101, DPB10101, DPB1*01, DPB01
Description	Recombinant, truncated Class II soluble Human Leukocyte Antigen (sHLA), naturally folded and glycosylated, loaded with endogenous peptides.
Serological Name	-
Serological Split	-
Allele Frequency [World Population]	
A chain	16.4%
B chain	6.0%

Associated products

[DPB10101/DPA10202](#)
[DPB10101/DPA10202pe](#)

Product Specification

Product name	HLA-DPB1*01:01/DPA1*02:02bio
HLA Species	Human
Host Cell Line Species	Mouse
Clone Designation	D11D8
Tail Specification	ZP
Peptide Load	Endogenous
Modification	Unmodified
Conjugation	Biotin
Complexity	Monomer
Protein Format	Recombinant, truncated, zipper-stabilized, soluble, non-modified, biotinylated, endogenously loaded
Storage Temperature	4°C (This product should be stored undiluted)
Form	Liquid
Concentration	300.0 µg/µl
Formulation	PBS/0.02% Sodium Azide
pH	7.4
Purification Method	Affinity Chromatography
Grade	Research Use Only [RUO]
Authentication Verification	Sequence Based Typing

Protein Sequences

Alpha Chain Sequence	IKADHVSTYA MFVQTHRPTG EFMFEFDEDE QFYVDLDKKE TVWHLEEFGR AFSFEAQGGL ANIAILNNL NTLIQRSNHT QAANDPPEVT VFPKEVELG QPNTLICHID RFFPPVLNVT WLCNGEPVTE GVAESLFLPR TDYSFHKFHY LTFVPSAEDV YDCRVEHWGL DQPLLKHWEA QEPIQMPETT EVDGGGGGAQ LEKELQALEK ENAQLEWELQ ALEKELAQ
Beta Chain Sequence	RATPENYVYQ GRQECYAFNG TQRFLERYIY NREEYARFDS DVGEFRAVTE LGRPAAEYWN SQKDILEEKR AVPDRVCRHN YELDEAVTLQ RRVQPKVNVS PSKKGPLQHH NLLVCHVTDF YPGSIQVRWF LNGQEETAGV VSTNLIRNGD WTFQILVMLE MTPQQGDVYI CQVEHTSLDS PVTVEWKAQS DSAQSKVDGG GGGAQLKKKL QALKKKNAQL KWKLQALKKK LAQ

Related Products

[DPB10501/DPA10202bio](#)
[DPB10401/DPA10201bio](#)
[DPB10402/DPA10103bio](#)
[DPB10201/DPA10103bio](#)

Applications

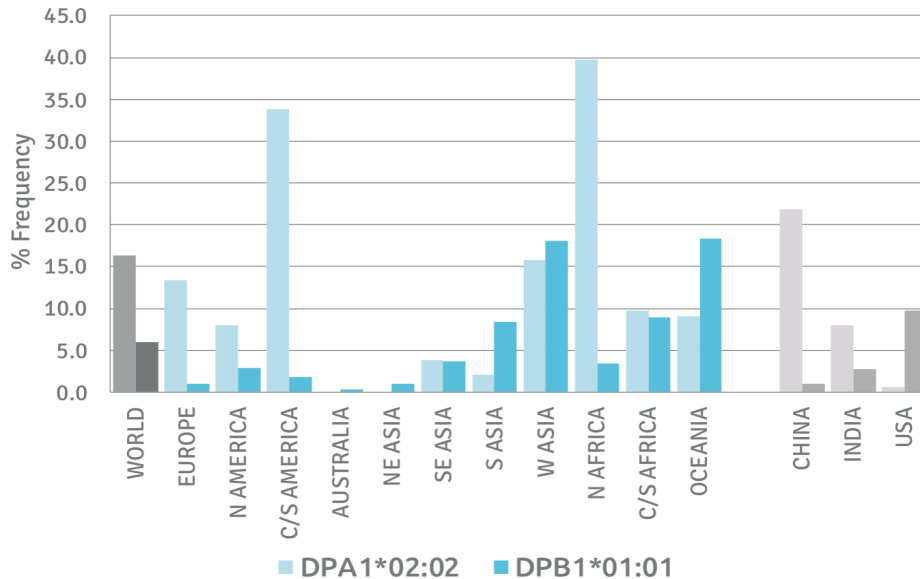
HLA Sandwich ELISAs
 HLA Direct ELISAs
 HLA-Sera Antibody Assays
 HLA Controls in ELISA Assays
 HLA Assay Standards
 HLA Blocking Assays
 HLA Neutralizing Assays
 HLA Competition Assays
 HLA Bead Assays
 HLA Immunization Procedures

Recommended Antibodies

-

Allele Frequency

Worldwide Allele Frequency



Please note:

ALL PRODUCTS ARE FOR RESEARCH USE ONLY. NOT FOR COMMERCIAL USE IN DIAGNOSTIC PROCEDURES.
 For more information, please visit our Policies section on our website. For licensing inquiries, please contact

licensing@hlaprotein.com

 HLA Protein
PURE PROTEIN LLC

Eplet Assignments

DPB1*01:01

Eplet	Polymorphic Residues	Antibody Reactivity
8V	8V	
8VG	8V9Y11G	
9Y	8V9Y	
11G	11G	
33E	33E	
33EA	33E36A	
33EYA	33E35Y36A	
35VA	35Y36A	
36A	36A	
55A	55A	
56A	56A	Yes
57E	57E	
65I	65I	
65IK	65I69K	
69K	69K	
76V	76V	
84DEAV	84D85E86A87V	Yes
96K	96K 170I	Yes
178L	178L	

Eplet Assignments

DPA1*02:02

Eplet	Polymorphic Residues	Antibody Reactivity
11M	11M	
28E	28E	
31Q	31Q	
50R	50R	Yes
83A	83A	
111R	111R	
127P	127P 160V	
160V	160V	
190T	190T	