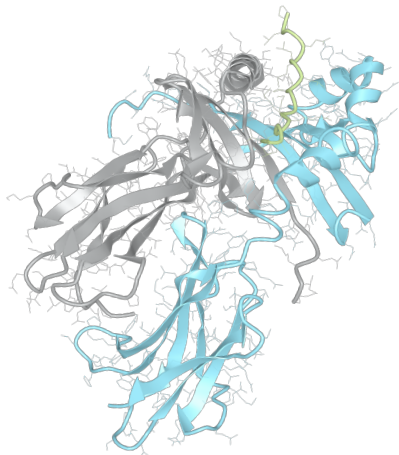


# Product datasheet



## sHLA– DPB1\*05:01 DPA1\*02:02

DPB1\*0501, DPB10501, DPB1\*05, DPB05  
DPA1\*0202, DPA10202, DPA1\*02, DPA02

<b>Serological Name</b>	-
<b>Peptide Load</b>	Endogenous
<b>Modification</b>	Unmodified
<b>Conjugation</b>	Unconjugated
<b>SKU</b>	DPB10501/DPA10202

### Product Description

<b>Allele Name</b>	DPA1*02:02 DPB1*05:01
<b>HLA Class</b>	HLA Class II
<b>HLA Gene Locus</b>	HLA-DP
<b>Alternative Allele Name A Chain</b>	DPA1*0202, DPA10202, DPA1*02, DPA02
<b>Alternative Allele Name B Chain</b>	DPB1*0501, DPB10501, DPB1*05, DPB05
<b>Description</b>	Recombinant, truncated Class II soluble Human Leukocyte Antigen (sHLA), naturally folded and glycosylated, loaded with endogenous peptides.
<b>Serological Name</b>	-
<b>Serological Split</b>	-
<b>Allele Frequency [World Population]</b>	
<b>A chain</b>	16.4%
<b>B chain</b>	21.3%

### Associated products

[DPB10501/DPA10202bio](#)  
[DPB10501/DPA10202pe](#)

## Product Specification

<b>Product name</b>	HLA-DPB1*05:01/DPA1*02:02
<b>HLA Species</b>	Human
<b>Host Cell Line Species</b>	Mouse
<b>Clone Designation</b>	A1
<b>Tail Specification</b>	ZP
<b>Peptide Load</b>	Endogenous
<b>Modification</b>	Unmodified
<b>Conjugation</b>	Unconjugated
<b>Complexity</b>	Monomer
<b>Protein Format</b>	Recombinant, truncated, zipper-stabilized, soluble, non-modified, non-labeled, endogenously loaded
<b>Storage Temperature</b>	4°C (This product should be stored undiluted)
<b>Form</b>	Liquid
<b>Concentration</b>	1000.0 µg/ml
<b>Formulation</b>	PBS/0.02% Sodium Azide
<b>pH</b>	7.4
<b>Purification Method</b>	Affinity Chromatography
<b>Grade</b>	Research Use Only [RUO]
<b>Authentication Verification</b>	Sequence Based Typing

## Protein Sequences

<b>Alpha Chain Sequence</b>	IKADHVSTYA MFVQTHRPTG EFMFEFDEDE QFYVDLDKKE TVWHLEEFGR AFSFEAQGGL ANIAILNNNL NTLIQRSNHT QAANDPPEVT VFPKEPVELG QPNTLICHID RFFPPVLNVT WLCNGEPVTE GVAESLFLPR TDYSFHKFHY LTFVPSAEDV YDCRVEHWGL DQPLLKHWEA QEPIQMPETT EVDGGGGGAQ LEKELQALEK ENAQLEWELQ ALEKELAQ
<b>Beta Chain Sequence</b>	RATPENYLFQ GRQECYAFNG TQRFLERYIY NREELVRFDS DVGEFRAVTE LGRPEAEYWN SQKDILEEKR AVPDRMCRHN YELDEAVTLQ RRVQPKVNVS PSKKGPLQHH NLLVCHVTDF YPGSIQVRWF LNGQEETAGV VSTNLIRNGD WTFQILVMLE MTPQQGDVYI CQVEHTSLDS PVTVEWKAQS DSARSKVDGG GGGACLKKKL QALKKKNAQL KWKLQALKKK LAQ

## Related Products

[DPB10501/DPA10202](#)  
[DPB10401/DPA10201](#)  
[DPB10402/DPA10103](#)  
[DPB10201/DPA10103](#)

## Applications

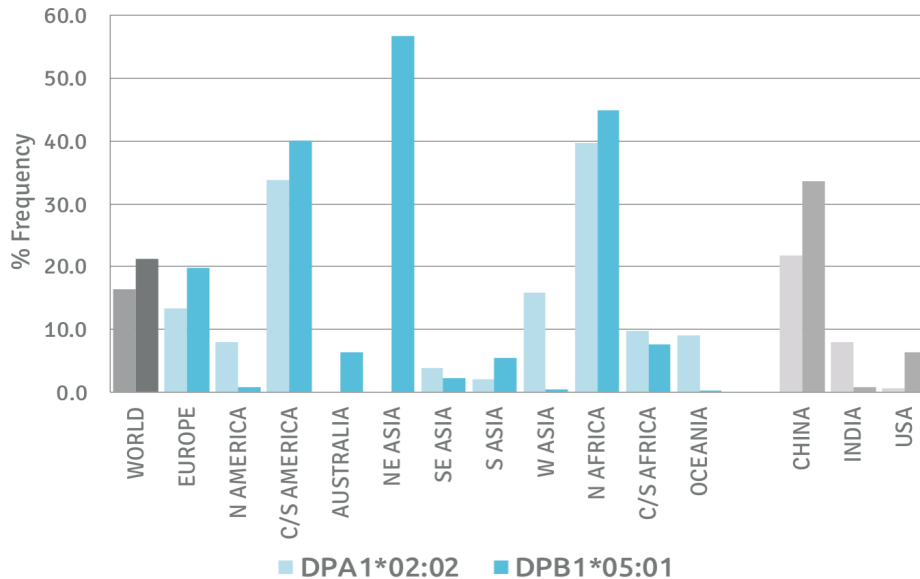
HLA Sandwich ELISAs  
 HLA Direct ELISAs  
 HLA-Sera Antibody Assays  
 HLA Controls in ELISA Assays  
 HLA Assay Standards  
 HLA Blocking Assays  
 HLA Neutralizing Assays  
 HLA Competition Assays  
 HLA Bead Assays  
 HLA Immunization Procedures

## Recommended Antibodies

-

## Allele Frequency

### Worldwide Allele Frequency



Please note:

ALL PRODUCTS ARE FOR RESEARCH USE ONLY. NOT FOR COMMERCIAL USE IN DIAGNOSTIC PROCEDURES.  
 For more information, please visit our Policies section on our website. For licensing inquiries, please contact

[licensing@hlaprotein.com](mailto:licensing@hlaprotein.com)

HLA Protein  
 PURE PROTEIN LLC

# Eplet Assignments

DPB1\*05:01

Eplet	Polymorphic Residues	Antibody Reactivity
8L	8L	
11G	11G	
33E	33E	
35LV	35L36V	
36V	36V	
55EAE	55E56A57E	
56A	56A	Yes
57E	57E	
65I	65I	
65IK	65I69K	
69K	69K	
76M	76M	
84DEAV	84D85E86A87V	Yes
96K	96K 170I	Yes
178L	178L	

# Eplet Assignments

DPA1\*02:02

Eplet	Polymorphic Residues	Antibody Reactivity
11M	11M	
28E	28E	
31Q	31Q	
50R	50R	Yes
83A	83A	
111R	111R	
127P	127P 160V	
160V	160V	
190T	190T	