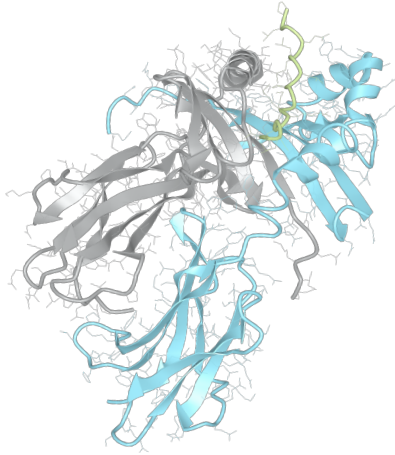


# Product datasheet



## sHLA– DQB1\*03:01 DQA1\*05:01

DQB1\*0301, DQB10301, DQB1\*03, DQB03, DQ7  
DQA1\*0501, DQA10501, DQA1\*05, DQA05

<b>Serological Name</b>	DQ7
<b>Peptide Load</b>	Endogenous
<b>Modification</b>	Unmodified
<b>Conjugation</b>	Unconjugated
<b>SKU</b>	DQB10301/DQA10501

### Product Description

<b>Allele Name</b>	DQA1*05:01 DQB1*03:01
<b>HLA Class</b>	HLA Class II
<b>HLA Gene Locus</b>	HLA-DQ
<b>Alternative Allele Name A Chain</b>	DQA1*0501, DQA10501, DQA1*05, DQA05
<b>Alternative Allele Name B Chain</b>	DQB1*0301, DQB10301, DQB1*03, DQB03, DQ7
<b>Description</b>	Recombinant, truncated Class II soluble Human Leukocyte Antigen (sHLA), naturally folded and glycosylated, loaded with endogenous peptides.
<b>Serological Name</b>	DQ7
<b>Serological Split</b>	DQ3
<b>Allele Frequency [World Population]</b>	
<b>A chain</b>	24.3%
<b>B chain</b>	22.3%

### Associated products

[DQB10301/DQA10501bio](#)  
[DQB10301/DQA10501pe](#)

## Product Specification

<b>Product name</b>	HLA-DQB1*03:01/DQA1*05:01
<b>HLA Species</b>	Human
<b>Host Cell Line Species</b>	Mouse
<b>Clone Designation</b>	
<b>Tail Specification</b>	ZP
<b>Peptide Load</b>	Endogenous
<b>Modification</b>	Unmodified
<b>Conjugation</b>	Unconjugated
<b>Complexity</b>	Monomer
<b>Protein Format</b>	Recombinant, truncated, zipper-stabilized, soluble, non-modified, non-labeled, endogenously loaded
<b>Storage Temperature</b>	4°C (This product should be stored undiluted)
<b>Form</b>	Liquid
<b>Concentration</b>	1000.0 µg/ml
<b>Formulation</b>	PBS/0.02% Sodium Azide
<b>pH</b>	7.4
<b>Purification Method</b>	Affinity Chromatography
<b>Grade</b>	Research Use Only [RUO]
<b>Authentication Verification</b>	Sequence Based Typing

## Protein Sequences

<b>Alpha Chain Sequence</b>	EDIVADHVAS YGVNLYQSYG PSGQYTHEFD GDEQFYVDLG RKETVWCLPV LRQFR.FDPQ FALTNIAVLK HNLNLIKRS NSTAATNEVP EVTVFSKSPV TLGQPNILIC LVDNIFPPVV NITWLSNGHS VTEGVSETSF LSKSDHSFFK ISYLTLLPSA EESYDCKVEH WGLDKPLLKH WEPEIPAPMS EVDGGGGGAQ LEKELQALEK ENAQLEWELQ ALEKELAQ
<b>Beta Chain Sequence</b>	RDSPEDFYVQ FKAMCYFTNG TERVRYVTRY IYNREEYARF DSDVEVYRAV TPLGPPDAEY WNSQKEVLER TRAEALDTCR HNYQLELRTT LQRRVEPTVT ISPSRTEALN HHNLLVCSVT DFYPAQIKVR WFRNDQEETT GVVSTPLIRN GDWTFQILVM LEMTPQHGDV YTCHVEHPSL QNPIITVEWRA QSESAQSKVD GGGGAQLKK KLQALKKKNA QLKWKLQALK KKLAAQ

## Related Products

[DQB10304/DQA10501](#)  
[DQB10301/DQA10201](#)  
[DQB10602/DQA10102](#)  
[DQB10302/DQA10201](#)

## Applications

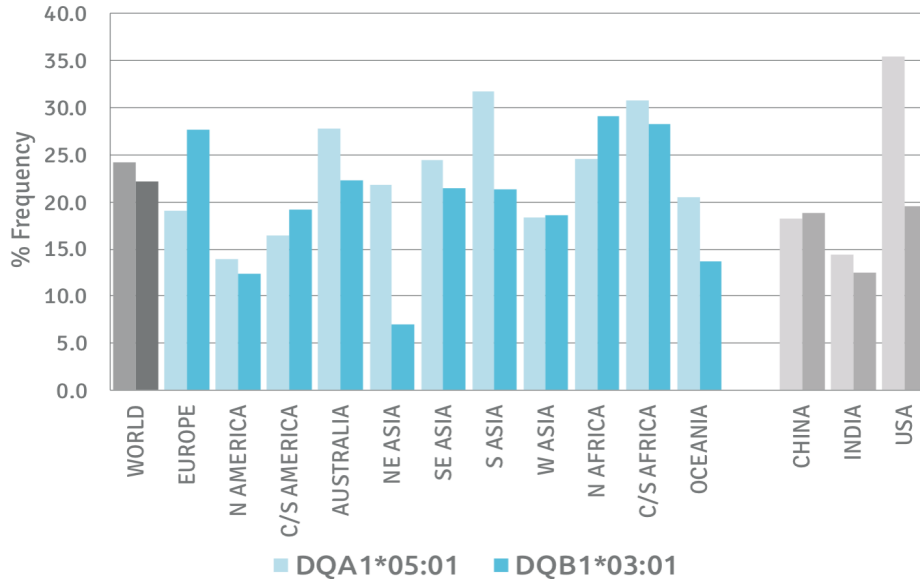
HLA Sandwich ELISAs  
 HLA Direct ELISAs  
 HLA-Sera Antibody Assays  
 HLA Controls in ELISA Assays  
 HLA Assay Standards  
 HLA Blocking Assays  
 HLA Neutralizing Assays  
 HLA Competition Assays  
 HLA Bead Assays  
 HLA Immunization Procedures

## Recommended Antibodies

-

## Allele Frequency

### Worldwide Allele Frequency



Please note:

ALL PRODUCTS ARE FOR RESEARCH USE ONLY. NOT FOR COMMERCIAL USE IN DIAGNOSTIC PROCEDURES.  
 For more information, please visit our Policies section on our website. For licensing inquiries, please contact

[licensing@hlaprotein.com](mailto:licensing@hlaprotein.com)

HLA Protein  
 PURE PROTEIN LLC

## Eplet Assignments

DQB1\*03:01

Eplet	Polymorphic Residues	Antibody Reactivity
3S	3S	
9Y	9Y	
23R	23R	
37YA	37Y38A	
45EV	45E46V47Y	Yes
46VY	46V 52P 28T	Yes
55PP	55P56P	Yes
55PPD	55P56P57D	
56P	56P	
56PD	56P57D	
66ER	66E67V70R71T	
66EV	66E67V	
67VT	67V71T	
70RT	70R71T	
74EL	74E75L77T	
77T	77T	Yes
84QL	84Q 86E 87L 89T 90T 125A	Yes
130R	130R	
135D	135D	
167H	167H	
182N	182N	Yes
185T	185T	

## Eplet Assignments

DQA1\*05:01

Eplet	Polymorphic Residues	Antibody Reactivity
2D	2D 199A	Yes
25YT	25Y26T	
40GR	40G 47C 50V 51L	Yes
61FT	61F 64T 55R	Yes
66IL	66I69L	
75S	75S 156L 163E 175K	Yes
76L	76L	
129H	129H	
160A	160A	