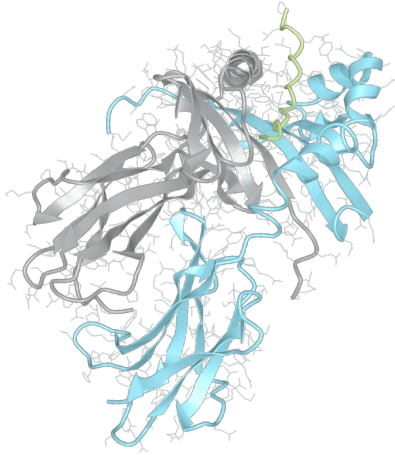


Product datasheet



sHLA– DQB1*03:01bio DQA1*05:05bio

DQB1*0301, DQB10301, DQB1*03, DQB03, DQ7
DQA1*0505, DQA10505, DQA1*05, DQA05

Serological Name	DQ7
Peptide Load	Endogenous
Modification	Unmodified
Conjugation	Biotin
SKU	DQB10301/DQA10505bio

Product Description

Allele Name	DQA1*05:05 DQB1*03:01
HLA Class	HLA Class II
HLA Gene Locus	HLA-DQ
Alternative Allele Name A Chain	DQA1*0505, DQA10505, DQA1*05, DQA05
Alternative Allele Name B Chain	DQB1*0301, DQB10301, DQB1*03, DQB03, DQ7
Description	Recombinant, truncated Class II soluble Human Leukocyte Antigen (sHLA), naturally folded and glycosylated, loaded with endogenous peptides.
Serological Name	DQ7
Serological Split	DQ3
Allele Frequency [World Population]	
A chain	10.5%
B chain	22.3%

Associated products

[DQB10301/DQA10505](#)
[DQB10301/DQA10505pe](#)

Product Specification

Product name	HLA-DQB1*03:01/DQA1*05:05bio
HLA Species	Human
Host Cell Line Species	Mouse
Clone Designation	
Tail Specification	ZP
Peptide Load	Endogenous
Modification	Unmodified
Conjugation	Biotin
Complexity	Monomer
Protein Format	Recombinant, truncated, zipper-stabilized, soluble, non-modified, biotinylated, endogenously loaded
Storage Temperature	4°C (This product should be stored undiluted)
Form	Liquid
Concentration	300.0 µg/µl
Formulation	PBS/0.02% Sodium Azide
pH	7.4
Purification Method	Affinity Chromatography
Grade	Research Use Only [RUO]
Authentication Verification	Sequence Based Typing

Protein Sequences

Alpha Chain Sequence	EDIVADHVAS YGVNLYQSYG PSGQYTHEFD GDEQFYVDLG RKETVWCLPV LRQFR.FDPQ FALTNIQAVLK HNLNLIKRS NSTAATNEVP EVTVFSKSPV TLGQPNILIC LVDNIFPPVV NITWLSNGHS VTEGVSETSF LSKSDHSFFK ISYLTLLPSA EESYDCKVEH WGLDKPLLKH WEPEIPAPMS EVDGGGGGAQ LEKELQALEK ENAQLEWELQ ALEKELAQ
Beta Chain Sequence	RDSPEDFVYQ FKAMCYFTNG TERVRYVTRY IYNREEYARF DSDVEVYRAV TPLGPPDAEY WNSQKEVLER TRAEALDTCR HNYQLELRTT LQRRVEPTVT ISPSRTEALN HHNLLVCSVT DFYPAQIKVR WFRNDQEETT GVVSTPLIRN GDWTFQILVM LEMTPQHGDV YTCHVEHPSL QNPIITVEWRA QSESAQSKVD GGGGAQLKK KLQALKKKNA QLKWKLQALK KKLAQ

Related Products

[DQB10304/DQA10505bio](#)
[DQB10301/DQA10201bio](#)
[DQB10602/DQA10102bio](#)
[DQB10302/DQA10201bio](#)

Applications

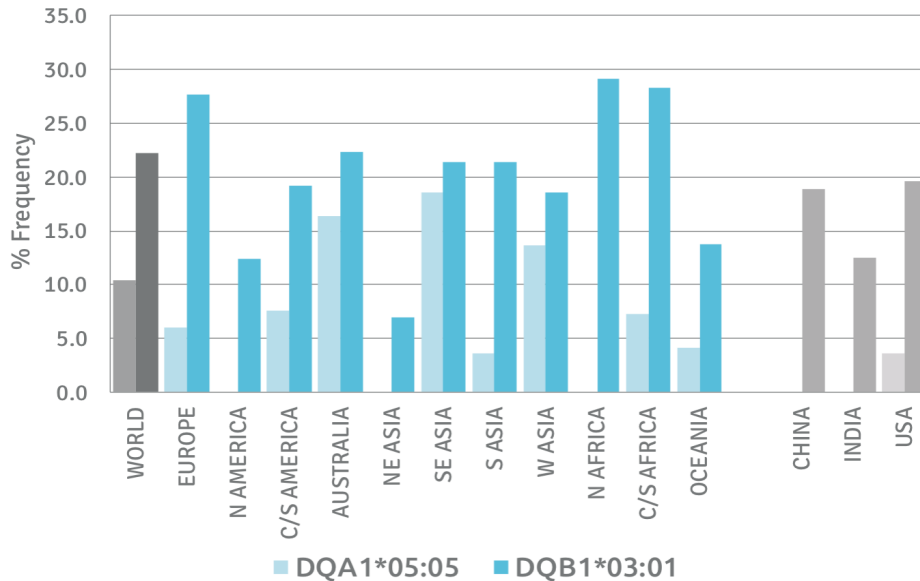
HLA Sandwich ELISAs
 HLA Direct ELISAs
 HLA-Sera Antibody Assays
 HLA Controls in ELISA Assays
 HLA Assay Standards
 HLA Blocking Assays
 HLA Neutralizing Assays
 HLA Competition Assays
 HLA Bead Assays
 HLA Immunization Procedures

Recommended Antibodies

-

Allele Frequency

Worldwide Allele Frequency



Please note:

ALL PRODUCTS ARE FOR RESEARCH USE ONLY. NOT FOR COMMERCIAL USE IN DIAGNOSTIC PROCEDURES.
 For more information, please visit our Policies section on our website. For licensing inquiries, please contact

licensing@hlaprotein.com

 HLA Protein
PURE PROTEIN LLC

Eplet Assignments

DQB1*03:01

Eplet	Polymorphic Residues	Antibody Reactivity
3S	3S	
9Y	9Y	
23R	23R	
37YA	37Y38A	
45EV	45E46V47Y	Yes
46VY	46V 52P 28T	Yes
55PP	55P56P	Yes
55PPD	55P56P57D	
56P	56P	
56PD	56P57D	
66ER	66E67V70R71T	
66EV	66E67V	
67VT	67V71T	
70RT	70R71T	
74EL	74E75L77T	
77T	77T	Yes
84QL	84Q 86E 87L 89T 90T 125A	Yes
130R	130R	
135D	135D	
167H	167H	
182N	182N	Yes
185T	185T	

Eplet Assignments

DQA1*05:05

Eplet	Polymorphic Residues	Antibody Reactivity
2D	2D 199A	Yes
25YT	25Y26T	
40GR	40G 47C 50V 51L	Yes
61FT	61F 64T 55R	Yes
66IL	66I69L	
75S	75S 156L 163E 175K	Yes
76L	76L	
129H	129H	
160A	160A	

