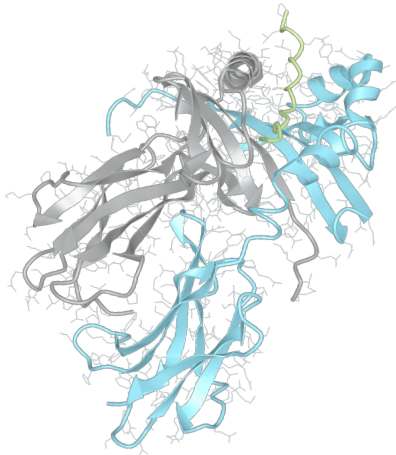


# Product datasheet



## sHLA– DQB1\*04:01bio DQA1\*02:01bio

DQB1\*0401, DQB10401, DQB1\*04, DQB04, DQ4  
DQA1\*0201, DQA10201, DQA1\*02, DQA02

<b>Serological Name</b>	DQ4
<b>Peptide Load</b>	Endogenous
<b>Modification</b>	Unmodified
<b>Conjugation</b>	Biotin
<b>SKU</b>	DQB10401/DQA10201bio

### Product Description

<b>Allele Name</b>	DQA1*02:01 DQB1*04:01
<b>HLA Class</b>	HLA Class II
<b>HLA Gene Locus</b>	HLA-DQ
<b>Alternative Allele Name A Chain</b>	DQA1*0201, DQA10201, DQA1*02, DQA02
<b>Alternative Allele Name B Chain</b>	DQB1*0401, DQB10401, DQB1*04, DQB04, DQ4
<b>Description</b>	Recombinant, truncated Class II soluble Human Leukocyte Antigen (sHLA), naturally folded and glycosylated, loaded with endogenous peptides.
<b>Serological Name</b>	DQ4
<b>Serological Split</b>	-
<b>Allele Frequency [World Population]</b>	
<b>A chain</b>	10.1%
<b>B chain</b>	2.6%

### Associated products

[DQB10401/DQA10201](#)  
[DQB10401/DQA10201pe](#)

## Product Specification

Product name	HLA-DQB1*04:01/DQA1*02:01bio
HLA Species	Human
Host Cell Line Species	Mouse
Clone Designation	EP197-C03
Tail Specification	ZP
Peptide Load	Endogenous
Modification	Unmodified
Conjugation	Biotin
Complexity	Monomer
Protein Format	Recombinant, truncated, zipper-stabilized, soluble, non-modified, biotinylated, endogenously loaded
Storage Temperature	4°C (This product should be stored undiluted)
Form	Liquid
Concentration	300.0 µg/µl
Formulation	PBS/0.02% Sodium Azide
pH	7.4
Purification Method	Affinity Chromatography
Grade	Research Use Only [RUO]
Authentication Verification	Sequence Based Typing

## Protein Sequences

Alpha Chain Sequence	EDIVADHVAS YGVNLYQSYG PSGQFTHEFD GDEEFYVDLE RKETVWKLPL FHRLR.FDPQ FALTNI AVLK HNLNLIKRS NSTAATNEVP EVT VFSKSPV TLGQPNTLIC LVDNIFPPVV NITWLSNGHS VTEGVSETSF LSKSDHSFFK ISYLTFLPSA DEIYDCKVEH WGLDEPLLKH WEPEIPAPMS EVDGGGGGAQ LEKELQALEK ENAQLEWELQ ALEKELAQ
Beta Chain Sequence	RDSPEDFVFQ FKGMCYFTNG TELVRGVTRY IYNREEYARF DSDVGVYRAV TPLGRDLDAEY WNSQKDILEE DRASVDTVCR HNYQLELRTT LQRRVEPTVT ISPSRTEALN HHNLLVCSVT DFYPAQIKVR WFRNDQEETT GVVSTPLIRN GDWTFQILVM LEMTPQRGDV YTCHVEHPSL QNPTIIVEWRA QSESAQSKVD GGGGAQLKK KLQALKKKNA QLKWKLQALK KKLAAQ

## Related Products

[DQB10402/DQA10201bio](#)  
[DQB10301/DQA10201bio](#)  
[DQB10602/DQA10102bio](#)  
[DQB10302/DQA10201bio](#)

## Applications

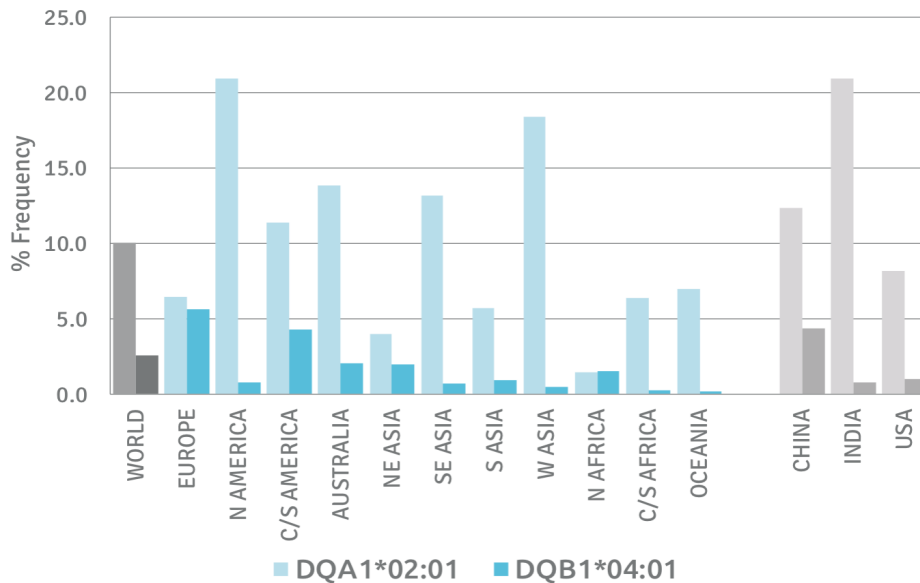
HLA Sandwich ELISAs  
 HLA Direct ELISAs  
 HLA-Sera Antibody Assays  
 HLA Controls in ELISA Assays  
 HLA Assay Standards  
 HLA Blocking Assays  
 HLA Neutralizing Assays  
 HLA Competition Assays  
 HLA Bead Assays  
 HLA Immunization Procedures

## Recommended Antibodies

-

## Allele Frequency

### Worldwide Allele Frequency



Please note:

ALL PRODUCTS ARE FOR RESEARCH USE ONLY. NOT FOR COMMERCIAL USE IN DIAGNOSTIC PROCEDURES.  
 For more information, please visit our Policies section on our website. For licensing inquiries, please contact

[licensing@hlaprotein.com](mailto:licensing@hlaprotein.com)

HLA Protein  
 PURE PROTEIN LLC

