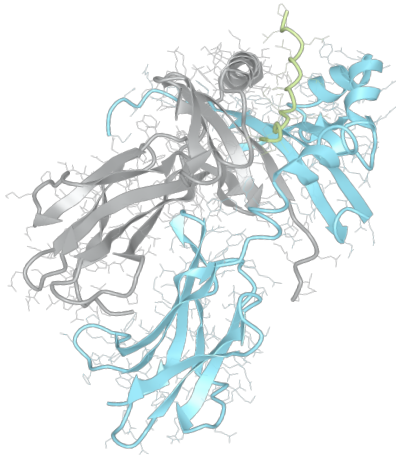


# Product datasheet



## sHLA- DRB1\*04:04 DRA\*01:01

DRB1\*0404, DRB10404, DRB1\*04, DRB04, DR4  
DRA\*0101, DRA0101, DRA\*01, DRA01

<b>Serological Name</b>	DR4
<b>Peptide Load</b>	Endogenous
<b>Modification</b>	Unmodified
<b>Conjugation</b>	Unconjugated
<b>SKU</b>	DRB10404

### Product Description

<b>Allele Name</b>	<p>DRA*01:01</p> <p>DRB1*04:04</p>
<b>HLA Class</b>	HLA Class II
<b>HLA Gene Locus</b>	HLA-DR
<b>Alternative Allele Name A Chain</b>	DRA*0101, DRA0101, DRA*01, DRA01
<b>Alternative Allele Name B Chain</b>	DRB1*0404, DRB10404, DRB1*04, DRB04, DR4
<b>Description</b>	Recombinant, truncated Class II soluble Human Leukocyte Antigen (sHLA), naturally folded and glycosylated, loaded with endogenous peptides.
<b>Serological Name</b>	DR4
<b>Serological Split</b>	-
<b>Allele Frequency [World Population]</b>	
<b>A chain</b>	-
<b>B chain</b>	2.5%

### Associated products

[DRB10404bio](#)  
[DRB10404pe](#)

## Product Specification

<b>Product name</b>	HLA-DRB1*04:04
<b>HLA Species</b>	Human
<b>Host Cell Line Species</b>	Mouse
<b>Clone Designation</b>	A12B4
<b>Tail Specification</b>	ZP
<b>Peptide Load</b>	Endogenous
<b>Modification</b>	Unmodified
<b>Conjugation</b>	Unconjugated
<b>Complexity</b>	Monomer
<b>Protein Format</b>	Recombinant, truncated, zipper-stabilized, soluble, non-modified, non-labeled, endogenously loaded
<b>Storage Temperature</b>	4°C (This product should be stored undiluted)
<b>Form</b>	Liquid
<b>Concentration</b>	1000.0 µg/ml
<b>Formulation</b>	PBS/0.02% Sodium Azide
<b>pH</b>	7.4
<b>Purification Method</b>	Affinity Chromatography
<b>Grade</b>	Research Use Only [RUO]
<b>Authentication Verification</b>	Sequence Based Typing

## Protein Sequences

<b>Alpha Chain Sequence</b>	<p>                     IKEEHVIIQA EFYLNPDQSG EFMDFDGDGDE IFHVDMAPKE TVWRLEEFGR FASFEAQGAL                      ANIAVDKANL EIMTKRSNYT PITNVPPEVT VLTNSPVELR EPNVLICFID KFTPPVVNVV                      WLRNGKPVTT GVSETVFLPR EDHLFRKFHY LPFLPSTEDV YDCRVEHWGL DEPLLKHWEF                      DAPSPLPETT EVDGGGGGAQ LEKELQALEK ENAQLEWELQ ALEKELAQ                 </p>
<b>Beta Chain Sequence</b>	<p>                     GDTRPRFLEQ VKHECHFFNG TERVRFLDRY FYHQEYVRF DSDVGEYRAV TELGRPDAEY                      WNSQKDLLEQ RRAAVDTYCR HNYGVVESFT VQRRVYPEVT VYPAKTQPLQ HHNLLVCSVN                      GFYPGSIEVR WFRNGQEEKT GVVSTGLIQN GDWTFQTLVM LETVPRSGEV YTCQVEHPSL                      TSPLTVEWRA RSESAQSKVD GGGGAQLKK KLQALKKKNA QLKWKLQALK KKLAQ                 </p>

## Related Products

[DRB10401](#)  
[DRB10407](#)  
[DRB11101](#)  
[DRB11501](#)

## Applications

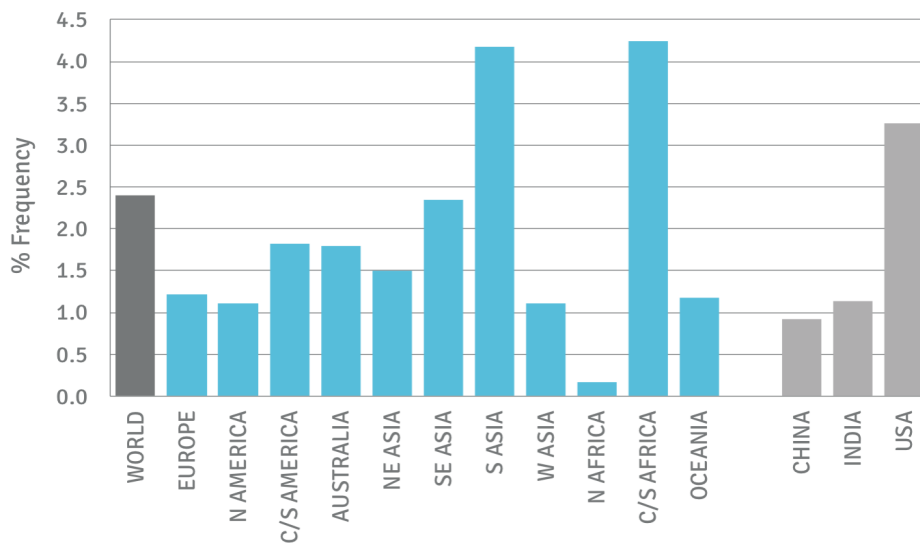
HLA Sandwich ELISAs  
HLA Direct ELISAs  
HLA-Sera Antibody Assays  
HLA Controls in ELISA Assays  
HLA Assay Standards  
HLA Blocking Assays  
HLA Neutralizing Assays  
HLA Competition Assays  
HLA Bead Assays  
HLA Immunization Procedures

## Recommended Antibodies

L243

## Allele Frequency

### Worldwide Allele Frequency



DRB1\*04:04

Please note:

ALL PRODUCTS ARE FOR RESEARCH USE ONLY. NOT FOR COMMERCIAL USE IN DIAGNOSTIC PROCEDURES.  
For more information, please visit our Policies section on our website. For licensing inquiries, please contact

[licensing@hlaprotein.com](mailto:licensing@hlaprotein.com)

 HLA Protein  
PURE PROTEIN LLC

