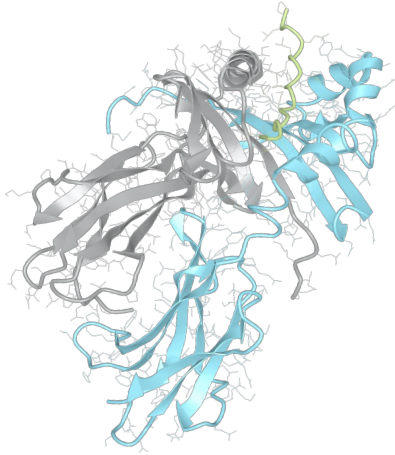


Product datasheet



sHLA- DRB1*11:01bio DRA*01:01bio

DRB1*1101, DRB11101, DRB1*11, DRB11, DR11
DRA*0101, DRA0101, DRA*01, DRA01

Serological Name	DR11
Peptide Load	Endogenous
Modification	Unmodified
Conjugation	Biotin
SKU	DRB11101bio

Product Description

Allele Name	<p>DRA*01:01</p> <p>DRB1*11:01</p>
HLA Class	HLA Class II
HLA Gene Locus	HLA-DR
Alternative Allele Name A Chain	DRA*0101, DRA0101, DRA*01, DRA01
Alternative Allele Name B Chain	DRB1*1101, DRB11101, DRB1*11, DRB11, DR11
Description	Recombinant, truncated Class II soluble Human Leukocyte Antigen (sHLA), naturally folded and glycosylated, loaded with endogenous peptides.
Serological Name	DR11
Serological Split	DR5
Allele Frequency [World Population]	
A chain	-
B chain	6.1%

Associated products

[DRB11101](#)
[DRB11101pe](#)

Product Specification

Product name	HLA-DRB1*11:01bio
HLA Species	Human
Host Cell Line Species	Mouse
Clone Designation	H9/III
Tail Specification	ZP
Peptide Load	Endogenous
Modification	Unmodified
Conjugation	Biotin
Complexity	Monomer
Protein Format	Recombinant, truncated, zipper-stabilized, soluble, non-modified, biotinylated, endogenously loaded
Storage Temperature	4°C (This product should be stored undiluted)
Form	Liquid
Concentration	300.0 µg/µl
Formulation	PBS/0.02% Sodium Azide
pH	7.4
Purification Method	Affinity Chromatography
Grade	Research Use Only [RUO]
Authentication Verification	Sequence Based Typing

Protein Sequences

Alpha Chain Sequence	<p>IKEEHVIIQA EFYLNPDQSG EFMDFDGDGE IFHVDMASSE TVWRLEEFGR FASFEAQGAL ANIAVDKANL EIMTKRSNYT PITNVPPEVT VLTNSPVELR EPNVLICFID KFTPPVVNVV WLRNGKPVTT GVSETVFLPR EDHLFRKFHY LPFLPSTEDV YDCRVEHWGL DEPLLKHWEF DAPSPLPETT EVDGGGGGAQ LEKELQALEK ENAQLEWELQ ALEKELAQ</p>
Beta Chain Sequence	<p>GDTRPRFLEY STSECHFFNG TERVRFLDRY FYNQEEYVRF DSDVGEFRAV TELGRPDEEY WNSQKDFLED RRAAVDTYCR HNYGVGESFT VQRRVHPKVT VYPSKTQPLQ HHNLLVCSVS GFYPGSIEVR WFRNGQEEKT GVVSTGLIHN GDWTFQTLVM LETVPRSGEV YTCQVEHPSV TSPLTVEWRA RSESAQSKVD GGGGAQLKK KLQALKKKNA QLKWKLQALK KKLAQ</p>

Related Products

[DRB11104bio](#)
[DRB11101bio](#)
[DRB10701bio](#)
[DRB11501bio](#)

Applications

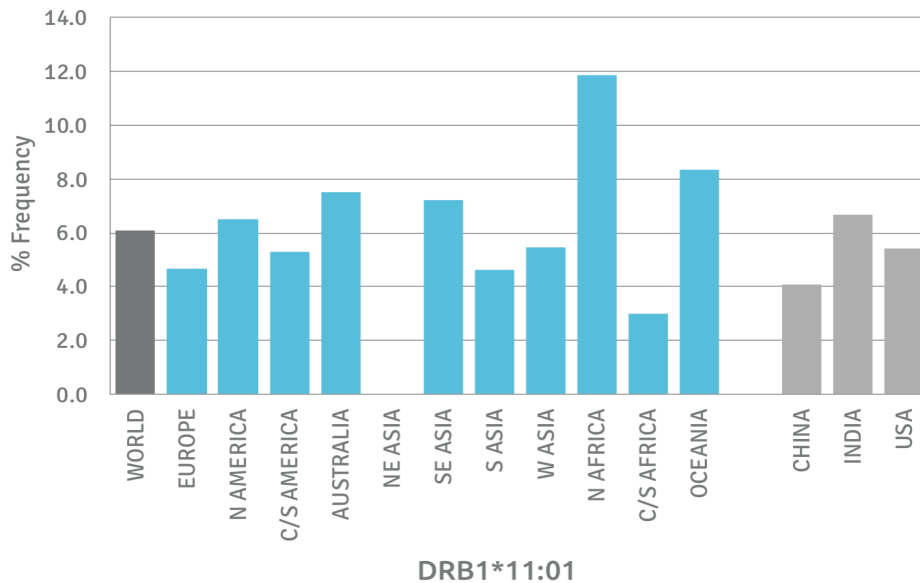
HLA Sandwich ELISAs
HLA Direct ELISAs
HLA-Sera Antibody Assays
HLA Controls in ELISA Assays
HLA Assay Standards
HLA Blocking Assays
HLA Neutralizing Assays
HLA Competition Assays
HLA Bead Assays
HLA Immunization Procedures

Recommended Antibodies

L243

Allele Frequency

Worldwide Allele Frequency



Please note:

ALL PRODUCTS ARE FOR RESEARCH USE ONLY. NOT FOR COMMERCIAL USE IN DIAGNOSTIC PROCEDURES.
For more information, please visit our Policies section on our website. For licensing inquiries, please contact

licensing@hlaprotein.com

 HLA Protein
PURE PROTEIN LLC

