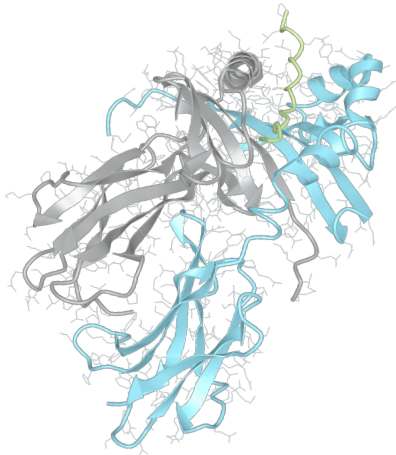


Product datasheet



sHLA– DRB1*13:03bio DRA*01:01bio

DRB1*1303, DRB11303, DRB1*13, DRB13, DR13
DRA*0101, DRA0101, DRA*01, DRA01

Serological Name	DR13
Peptide Load	Endogenous
Modification	Unmodified
Conjugation	Biotin
SKU	DRB11303bio

Product Description

Allele Name	<p>DRA*01:01</p> <p>DRB1*13:03</p>
HLA Class	HLA Class II
HLA Gene Locus	HLA-DR
Alternative Allele Name A Chain	DRA*0101, DRA0101, DRA*01, DRA01
Alternative Allele Name B Chain	DRB1*1303, DRB11303, DRB1*13, DRB13, DR13
Description	Recombinant, truncated Class II soluble Human Leukocyte Antigen (sHLA), naturally folded and glycosylated, loaded with endogenous peptides.
Serological Name	DR13
Serological Split	DR6
Allele Frequency [World Population]	
A chain	-
B chain	1.8%

Associated products

[DRB11303](#)
[DRB11303pe](#)

Product Specification

Product name	HLA-DRB1*13:03bio
HLA Species	Human
Host Cell Line Species	Mouse
Clone Designation	#4.8
Tail Specification	ZP
Peptide Load	Endogenous
Modification	Unmodified
Conjugation	Biotin
Complexity	Monomer
Protein Format	Recombinant, truncated, zipper-stabilized, soluble, non-modified, biotinylated, endogenously loaded
Storage Temperature	4°C (This product should be stored undiluted)
Form	Liquid
Concentration	300.0 µg/µl
Formulation	PBS/0.02% Sodium Azide
pH	7.4
Purification Method	Affinity Chromatography
Grade	Research Use Only [RUO]
Authentication Verification	Sequence Based Typing

Protein Sequences

Alpha Chain Sequence	<p>IKEEHVIIQA EFYLNPDQSG EFMDFDGDGE IFHVDMASSE TVWRLEEFGR FASFEAQGAL ANIAVDKANL EIMTKRSNYT PITNVPPEVT VLTNSPVELR EPNVLICFID KFTPPVVNVV WLRNGKPVTT GVSETVFLPR EDHLFRKFHY LPFLPSTEDV YDCRVEHWGL DEPLLKHWEF DAPSPLPETT EVDGGGGGAQ LEKELQALEK ENAQLEWELQ ALEKELAQ</p>
Beta Chain Sequence	<p>GDTRPRFLEY STSECHFFNG TERVRFLDRY FYNQEEYVRF DSDVGEYRAV TELGRPSAEY WNSQKDILED KRAAVDTYCR HNYGVGESFT VQRRVHPKVT VYPSKTQPLQ HHNLLVCSVS GFYPGSIEVR WFRNGQEEKT GVVSTGLIHN GDWTFQTLVM LETVPRSGEV YTCQVEHPSV TSPLTVEWRA RSESAQSKVD GGGGAQLKK KLQALKKKNA QLKWKLQALK KKLAQ</p>

Related Products

[DRB11301bio](#)
[DRB11302bio](#)
[DRB11101bio](#)
[DRB11501bio](#)

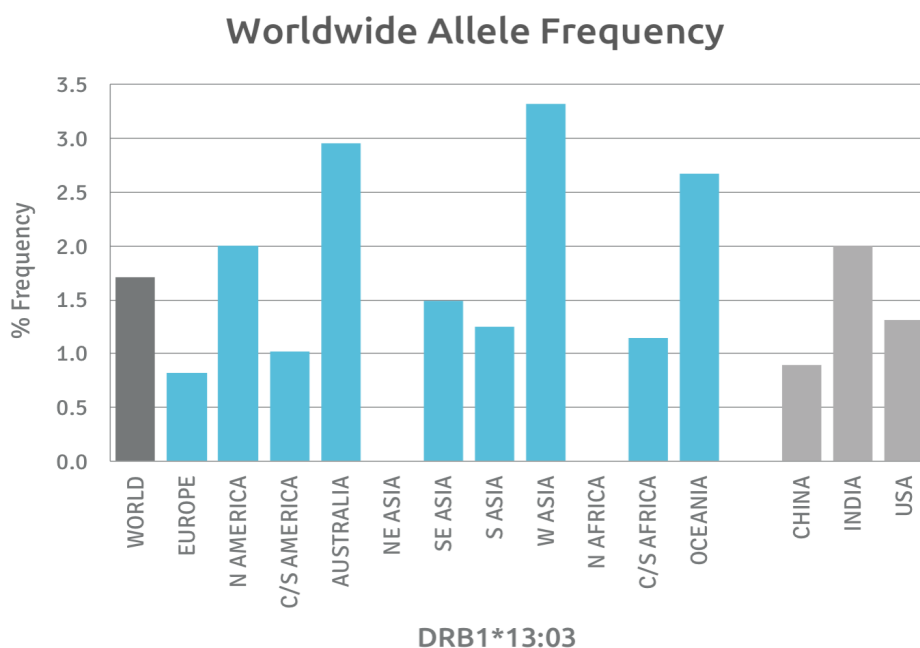
Applications

HLA Sandwich ELISAs
HLA Direct ELISAs
HLA-Sera Antibody Assays
HLA Controls in ELISA Assays
HLA Assay Standards
HLA Blocking Assays
HLA Neutralizing Assays
HLA Competition Assays
HLA Bead Assays
HLA Immunization Procedures

Recommended Antibodies

L243

Allele Frequency



Please note:

ALL PRODUCTS ARE FOR RESEARCH USE ONLY. NOT FOR COMMERCIAL USE IN DIAGNOSTIC PROCEDURES.
For more information, please visit our Policies section on our website. For licensing inquiries, please contact

licensing@hlaprotein.com

 HLA Protein
PURE PROTEIN LLC

Eplet	Polymorphic Residues	Antibody Reactivity
4R	4R	Yes
11STS	9E10Y11S12T13S	Yes
13SE	13S14E	
16H	16H	
25R	25R	Yes
26F	26F	
28D	28D	
31F	31F	
31FY	31F32Y	
32Y	32Y	
32YN	32Y33N	
33N	33N	
37Y	37Y	
37YV	37Y38V	Yes
38V	38V	
40F	40F41D	
47Y	47Y	
47YR	47Y48R	
57S	57S58A60Y	Yes
58A	58A	
58AY	58A60Y	
60Y	60Y	
67I	67I	
70D	70D	Yes
70DA	70D73A	Yes
71K	71K	
73A	73A77T	Yes
74A	73A74A77T	
77T	77T	Yes
77TY	77T78Y	
78Y	78Y	
85V	85V	
86G	85V86G	
96H	96H	
96HK	96H98K120S	Yes
98K	98K	
98KS	98K120S	
108P	105K108P	
112H	112H	
120S	120S	
140TV	140T142V	
149H	149H	
180V	180V	
180VTP	180V181T183P	
181T	181T	
189R	187E189R	