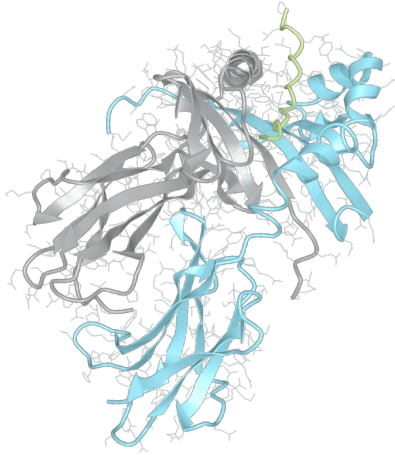


# Product datasheet



## sHLA– DRB1\*15:03bio DRA\*01:01bio

DRB1\*1503, DRB11503, DRB1\*15, DRB15, DR15  
DRA\*0101, DRA0101, DRA\*01, DRA01

<b>Serological Name</b>	DR15
<b>Peptide Load</b>	Endogenous
<b>Modification</b>	Unmodified
<b>Conjugation</b>	Biotin
<b>SKU</b>	DRB11503bio

### Product Description

<b>Allele Name</b>	<p>DRA*01:01</p> <p>DRB1*15:03</p>
<b>HLA Class</b>	HLA Class II
<b>HLA Gene Locus</b>	HLA-DR
<b>Alternative Allele Name A Chain</b>	DRA*0101, DRA0101, DRA*01, DRA01
<b>Alternative Allele Name B Chain</b>	DRB1*1503, DRB11503, DRB1*15, DRB15, DR15
<b>Description</b>	Recombinant, truncated Class II soluble Human Leukocyte Antigen (sHLA), naturally folded and glycosylated, loaded with endogenous peptides.
<b>Serological Name</b>	DR15
<b>Serological Split</b>	DR2
<b>Allele Frequency [World Population]</b>	
<b>A chain</b>	-
<b>B chain</b>	2.6%

### Associated products

[DRB11503](#)  
[DRB11503pe](#)

## Product Specification

<b>Product name</b>	HLA-DRB1*15:03bio
<b>HLA Species</b>	Human
<b>Host Cell Line Species</b>	Mouse
<b>Clone Designation</b>	G11F7
<b>Tail Specification</b>	ZP
<b>Peptide Load</b>	Endogenous
<b>Modification</b>	Unmodified
<b>Conjugation</b>	Biotin
<b>Complexity</b>	Monomer
<b>Protein Format</b>	Recombinant, truncated, zipper-stabilized, soluble, non-modified, biotinylated, endogenously loaded
<b>Storage Temperature</b>	4°C (This product should be stored undiluted)
<b>Form</b>	Liquid
<b>Concentration</b>	300.0 µg/µl
<b>Formulation</b>	PBS/0.02% Sodium Azide
<b>pH</b>	7.4
<b>Purification Method</b>	Affinity Chromatography
<b>Grade</b>	Research Use Only [RUO]
<b>Authentication Verification</b>	Sequence Based Typing

## Protein Sequences

<b>Alpha Chain Sequence</b>	<p>IKEEHVIIQA EFYLNPDQSG EFMDFDGDGE IFHVDMAPKE TVWRLEEFGR FASFQAQAL          ANIAVDKANL EIMTKRSNYT PITNVPPEVT VLTNSPVELR EPNVLICFID KFTPPVVNVV          WLRNGKPVTT GVSETVFLPR EDHLFRKFHY LPFLPSTEDV YDCRVEHWGL DEPLLKHWEF          DAPSPLPETT EVDGGGGGAQ LEKELQALEK ENAQLEWELQ ALEKELAQ</p>
<b>Beta Chain Sequence</b>	<p>GDTRPRFLWQ PKRECHFFNG TERVRFLDRH FYNQEEVRF DSDVGEFRAV TELGRPDAEY          WNSQKDILEQ ARAAVDTYCR HNYGVVESFT VQRRVQPKVT VYPSKTQPLQ HHNLLVCSVS          GFYPGSIEVR WFLNGQEKA GMVSTGLIQN GDWTFQTLVM LETVPRSGEV YTCQVEHPSV          TSPLTVEWRA RSESAQSKVD GGGGAQLKK KLQALKKKNA QLEKWLQALK KKLAQ</p>

## Related Products

[DRB11501bio](#)  
[DRB11502bio](#)  
[DRB11101bio](#)  
[DRB11501bio](#)

## Applications

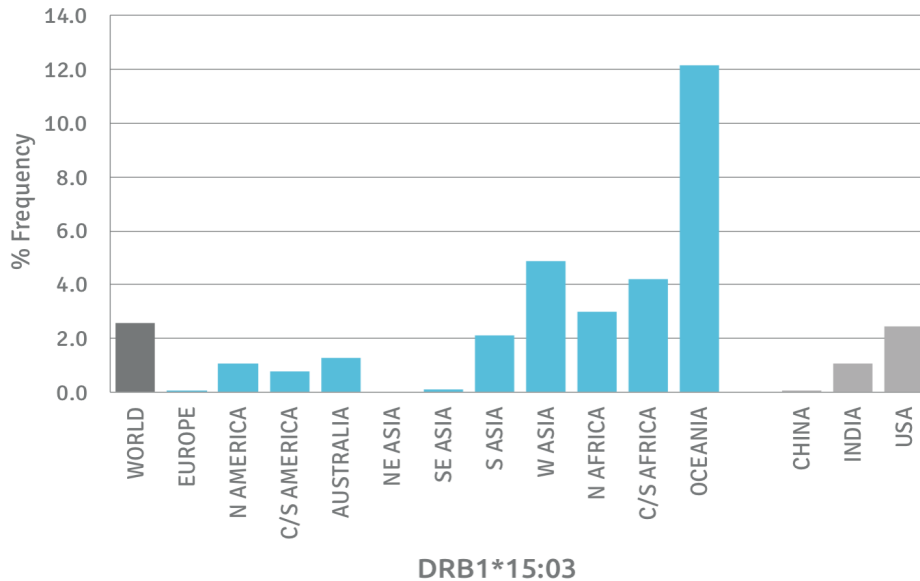
HLA Sandwich ELISAs  
HLA Direct ELISAs  
HLA-Sera Antibody Assays  
HLA Controls in ELISA Assays  
HLA Assay Standards  
HLA Blocking Assays  
HLA Neutralizing Assays  
HLA Competition Assays  
HLA Bead Assays  
HLA Immunization Procedures

## Recommended Antibodies

L243

## Allele Frequency

### Worldwide Allele Frequency



Please note:

ALL PRODUCTS ARE FOR RESEARCH USE ONLY. NOT FOR COMMERCIAL USE IN DIAGNOSTIC PROCEDURES.  
For more information, please visit our Policies section on our website. For licensing inquiries, please contact

[licensing@hlaprotein.com](mailto:licensing@hlaprotein.com)

 HLA Protein  
PURE PROTEIN LLC

Eplet Assignments

DRB1\*15:03

Eplet	Polymorphic Residues	Antibody Reactivity
4R	4R	Yes
16H	16H	
25R	25R	Yes
26F	26F	
28D	28D	
30H	30H	
31F	31F	
31FY	31F32Y	
32Y	32Y	
32YN	32Y33N	
33N	33N	
37S	37S38V	
38V	38V	
40F	40F41D	
47F	47F48R	Yes
57D	57D60Y	
57DA	57D58A60Y	
58A	58A	
58AY	58A60Y	
60Y	60Y	
67I	67I	
70Q	70Q	
70QA	70Q73A	
70QT	70Q77T	Yes
71A	70Q71A73A	
73A	73A77T	Yes
74A	73A74A77T	
77T	77T	Yes
77TY	77T78Y	
78Y	78Y	
85V	85V	
85VV	85V86V	
86V	86V	
96Q	96Q	
98K	98K	
98KS	98K120S	
108P	105K108P	
112H	112H	
120S	120S	
140A	140A	
142M	142M	Yes
149Q	149Q	
180V	180V	
180VTP	180V181T183P	
181T	181T	
189R	187E189R	