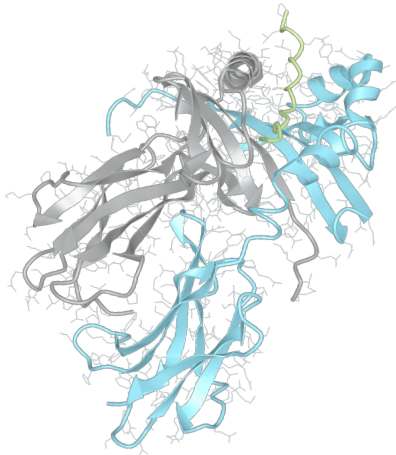


# Product datasheet



## sHLA– DRB5\*02:02bio DRA\*01:01bio

DRB5\*0202, DRB50202, DRB5\*02, DRB02, DR51  
DRA\*0101, DRA0101, DRA\*01, DRA01

<b>Serological Name</b>	DR51
<b>Peptide Load</b>	Endogenous
<b>Modification</b>	Unmodified
<b>Conjugation</b>	Biotin
<b>SKU</b>	DRB50202bio

### Product Description

<b>Allele Name</b>	<p>DRA*01:01</p> <p>DRB5*02:02</p>
<b>HLA Class</b>	HLA Class II
<b>HLA Gene Locus</b>	HLA-DR
<b>Alternative Allele Name A Chain</b>	DRA*0101, DRA0101, DRA*01, DRA01
<b>Alternative Allele Name B Chain</b>	DRB5*0202, DRB50202, DRB5*02, DRB02, DR51
<b>Description</b>	Recombinant, truncated Class II soluble Human Leukocyte Antigen (sHLA), naturally folded and glycosylated, loaded with endogenous peptides.
<b>Serological Name</b>	DR51
<b>Serological Split</b>	-
<b>Allele Frequency [World Population]</b>	
<b>A chain</b>	-
<b>B chain</b>	-

### Associated products

[DRB50202](#)  
[DRB50202pe](#)

## Product Specification

<b>Product name</b>	HLA-DRB5*02:02bio
<b>HLA Species</b>	Human
<b>Host Cell Line Species</b>	Mouse
<b>Clone Designation</b>	C7C2
<b>Tail Specification</b>	ZP
<b>Peptide Load</b>	Endogenous
<b>Modification</b>	Unmodified
<b>Conjugation</b>	Biotin
<b>Complexity</b>	Monomer
<b>Protein Format</b>	Recombinant, truncated, zipper-stabilized, soluble, non-modified, biotinylated, endogenously loaded
<b>Storage Temperature</b>	4°C (This product should be stored undiluted)
<b>Form</b>	Liquid
<b>Concentration</b>	300.0 µg/µl
<b>Formulation</b>	PBS/0.02% Sodium Azide
<b>pH</b>	7.4
<b>Purification Method</b>	Affinity Chromatography
<b>Grade</b>	Research Use Only [RUO]
<b>Authentication Verification</b>	Sequence Based Typing

## Protein Sequences

<b>Alpha Chain Sequence</b>	<p>IKEEHVIIQA EFYLNPDQSG EFMDFDGDGDE IFHVDMAPKE TVWRLEEFGR FASFQAQAL          ANIAVDKANL EIMTKRSNYT PITNVPPEVT VLTNSPVELR EPNVLICFID KFTPPVVNVV          WLRNGKPVTT GVSETVFLPR EDHLFRKFHY LPFLPSTEDV YDCRVEHWGL DEPLLKHWEF          DAPSPLPETT EVDGGGGGAQ LEKELQALEK ENAQLEWELQ ALEKELAQ</p>
<b>Beta Chain Sequence</b>	<p>GDTRPCFLQQ DKYECHFFNG TERVRFLHRG IYNQEENVRF DSDVGEYRAV TELGRPDAEY          WNSQKDILEQ ARAAVDTYCR HNYGAVESFT VQRRVEPKVT VYPARTQTLQ HHNLLVCSVN          GFYPGSIEVR WFRNGQEKA GVVSTGLIQN GDWTFQILVM LETVPRSGEV YTCQVEHPSV          TSPLTVEWRA QSESAQSKVD GGGGAQLKK KLQALKKKNA QLKWKLQALK KKLAQ</p>

## Related Products

[DRB50101bio](#)  
[DRB50102bio](#)  
[DRB11101bio](#)  
[DRB11501bio](#)

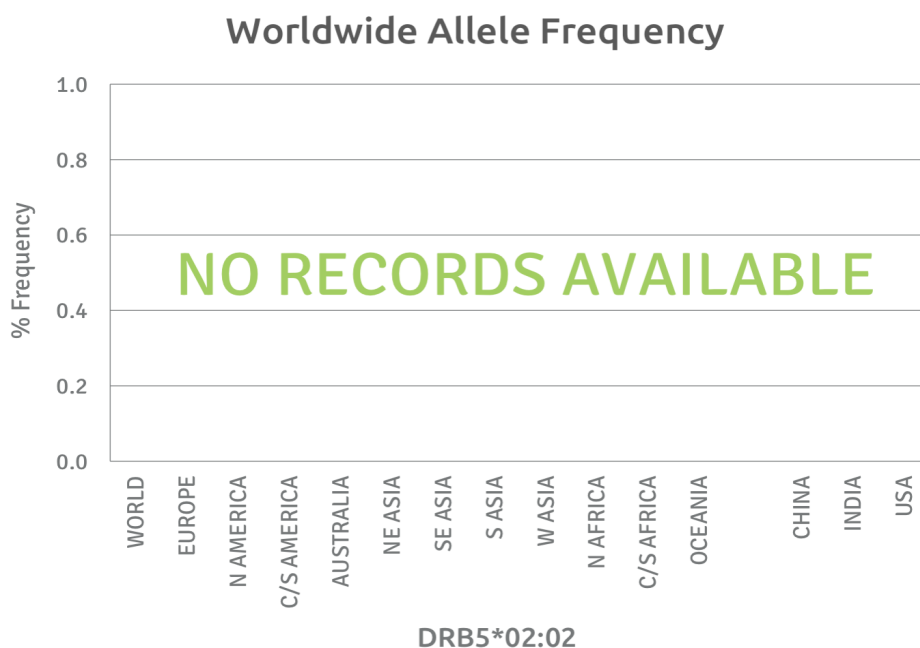
## Applications

HLA Sandwich ELISAs  
HLA Direct ELISAs  
HLA-Sera Antibody Assays  
HLA Controls in ELISA Assays  
HLA Assay Standards  
HLA Blocking Assays  
HLA Neutralizing Assays  
HLA Competition Assays  
HLA Bead Assays  
HLA Immunization Procedures

## Recommended Antibodies

L243

## Allele Frequency



Please note:

ALL PRODUCTS ARE FOR RESEARCH USE ONLY. NOT FOR COMMERCIAL USE IN DIAGNOSTIC PROCEDURES.  
For more information, please visit our Policies section on our website. For licensing inquiries, please contact

[licensing@hlaprotein.com](mailto:licensing@hlaprotein.com)

 HLA Protein  
PURE PROTEIN LLC

# Eplet Assignments

DRB5\*02:02

Eplet	Polymorphic Residues	Antibody Reactivity
4R	4R	Yes
6C	6C	
16H	16H	
25R	25R	Yes
26F	26F	
28H	28H	
30G	28H30G31I	
31I	31I32Y33N	
32Y	32Y	
32YN	32Y33N	
33N	33N	
37N	37N38V	
38V	38V	
40F	40F41D	
47Y	47Y	
47YR	47Y48R	
57D	57D60Y	
57DA	57D58A60Y	
58A	58A	
58AY	58A60Y	
60Y	60Y	
67I	67I	
70Q	70Q	
70QA	70Q73A	
70QT	70Q77T	Yes
71A	70Q71A73A	
73A	73A77T	Yes
74A	73A74A77T	
77T	77T	Yes
77TY	77T78Y	
78Y	78Y	
85A	85A86V	
86V	86V	
96EV	96E98K180V	Yes
98K	98K	
98KN	98K120N	
104A	104A	Yes
108T	108T	Yes
112H	112H	
120N	120N	
140A	140A	
140AV	140A142V	
149Q	149Q	
180V	180V	
180VTP	180V181T183P	
181T	181T	
189R	187E189R	